

2854 Avdelok XT

Steel - Large truss head
12.7 mm (1/2") - 25.4 mm (1")

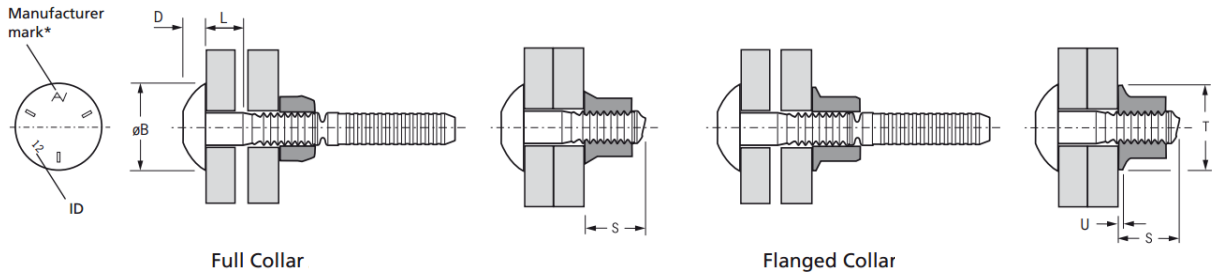
Features

- Large diameter lockbolt for demanding engineering applications
- Exceptional shear and tensile strength provides consistent high performance, required in load-bearing structural applications
- Excellent vibration resistance
- High security tamper resistance - TIR approved
- Tolerates variation in joint - allows angled installation up to 7°
- Quick and easy to install - requires minimum skill labour
- Consistent installation prevents rework and associated costs
- Simple visual inspection for quality assurance joints
- Simple installation tooling eliminates the cost of calibration and reduces maintenance
- Installed Avdelok XT fasteners provide a minimum shear, tensile and pre-load strength which is equivalent to or exceeds ISO898-1 property class 8.8 or ASTM A-325 standards

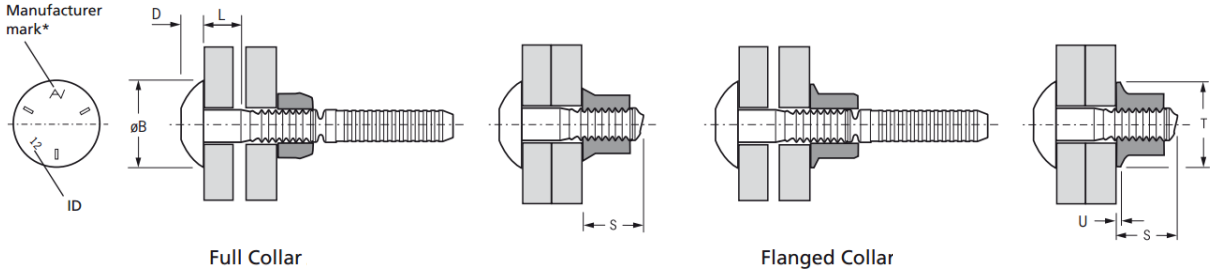


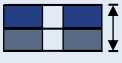

Material

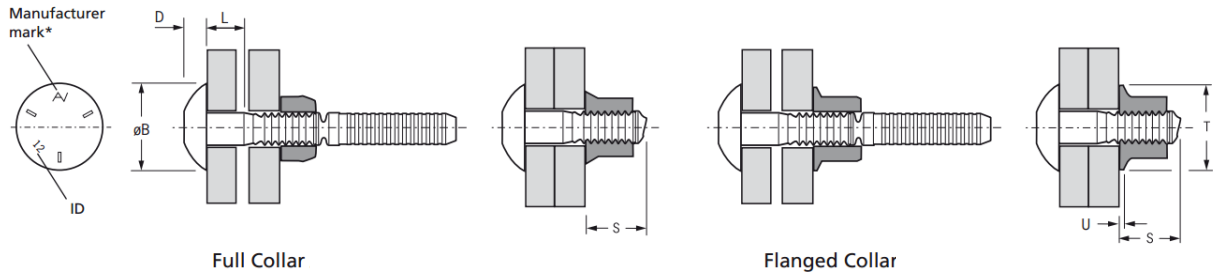
- Pin: Carbon steel, zinc plated 15 µm, clear trivalent passivated
- Collar: Low carbon steel, zinc plated, 10 µm

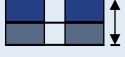



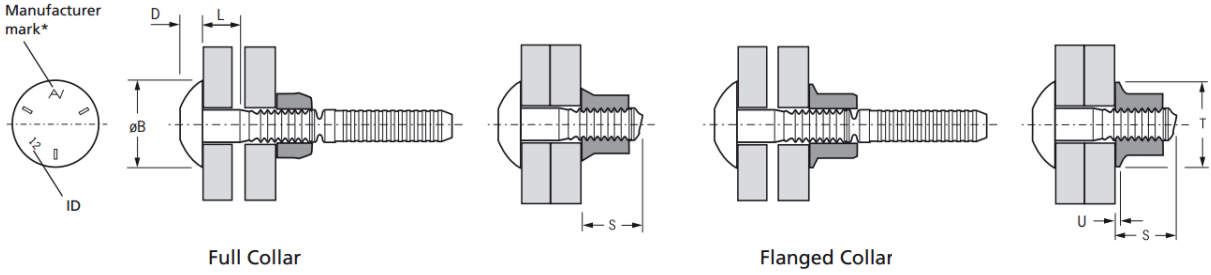
Part No. Pin	Size ø	ID	 w. Full Collar		 Hole Size	L	øB	D	Part No.			
			Full Collar						Flanged Collar ⁽¹⁾			
	nom.	-	min.	max.	-	nom.	max.	max.	S max.	S max.	øT max.	U nom.
02854-01604	12.7 (1/2")	4	6.35	12.70	13.5	4.60	29.0	7.8	02662-01600	02615-01600		
02854-01608		8	12.70	19.05		10.95						
02854-01612		12	19.05	25.40		17.30						
02854-01616		16	25.40	31.75		23.65						
02854-01620		20	31.75	38.10		30.00						
02854-01624		24	38.10	44.45		36.35						
02854-01628		28	44.45	50.80		42.70						
02854-01632		32	50.80	57.15		49.05						
02854-01636		36	57.15	63.50		55.40						
02854-01640		40	63.50	69.85		61.75						
02854-01644		44	69.85	76.20		68.10						
02854-01648		48	76.20	82.55		74.45						
02854-01652		52	82.55	88.90		80.80						
02854-01656		56	88.90	95.25		87.15						
02854-01660		60	95.25	101.60		93.50						
02854-01664		64	101.60	107.95		99.85						
02854-01668	68	107.95	114.30	106.20								
02854-01672	72	114.30	120.65	112.55								
02854-01676	76	120.65	127.00	118.90								
02854-01680	80	127.00	133.35	125.25								



Part No. Pin	Size ø	ID	 w. Full Collar		 Hole Size	L	øB	D	Part No.	Part No.		
			nom.	-					min.	max.	-	nom.
02854-02004	15.9 (5/8")	4	6.35	12.70	16.7	4.60	36.5	9.2	02662-02000 32.6	02615-02000 36.6 32.6 3.96		
02854-02008		8	12.70	19.05		10.95						
02854-02012		12	19.05	25.40		17.30						
02854-02016		16	25.40	31.75		23.65						
02854-02020		20	31.75	38.10		30.00						
02854-02024		24	38.10	44.45		36.35						
02854-02028		28	44.45	50.80		42.70						
02854-02032		32	50.80	57.15		49.05						
02854-02036		36	57.15	63.50		55.40						
02854-02040		40	63.50	69.85		61.75						
02854-02044		44	69.85	76.20		68.10						
02854-02048		48	76.20	82.55		74.45						
02854-02052		52	82.55	88.90		80.80						
02854-02056		56	88.90	95.25		87.15						
02854-02060		60	95.25	101.60		93.50						
02854-02064		64	101.60	107.95		99.85						
02854-02068		68	107.95	114.30		106.20						
02854-02072	72	114.30	120.65	112.55								
02854-02076	76	120.65	127.00	118.90								
02854-02404	19.1 (3/4")	4	6.35	12.70	19.9	4.60	43.6	10.9	02662-02400 35.0	02615-02400 39.8 38.9 4.78		
02854-02408		8	12.70	19.05		10.95						
02854-02412		12	19.05	25.40		17.30						
02854-02416		16	25.40	31.75		23.65						
02854-02420		20	31.75	38.10		30.00						
02854-02424		24	38.10	44.45		36.35						
02854-02428		28	44.45	50.80		42.70						
02854-02432		32	50.80	57.15		49.05						
02854-02436		36	57.15	63.50		55.40						
02854-02440		40	63.50	69.85		61.75						
02854-02444		44	69.85	76.20		68.10						
02854-02448		48	76.20	82.55		74.45						
02854-02452		52	82.55	88.90		80.80						
02854-02456		56	88.90	95.25		87.15						
02854-02460		60	95.25	101.60		93.50						
02854-02464		64	101.60	107.95		99.85						
02854-02468		68	107.95	114.30		106.20						
02854-02472	72	114.30	120.65	112.55								
02854-02476	76	120.65	127.00	118.90								



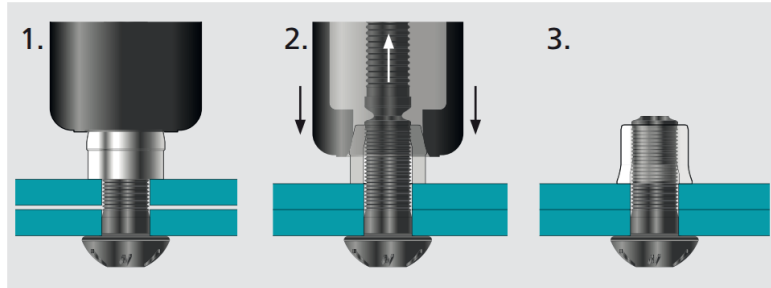
Part No. Pin	Size ø	ID	 w. Full Collar		 Hole Size	L	øB	D	Part No.			
			Full Collar						Flanged Collar ⁽¹⁾			
	nom.	-	min.	max.	-	nom.	max.	max.	S max.	S max.	øT max.	U nom.
02851-02808	22.2 (7/8")	8	12.70	19.05	23.1	10.95	50.8	12.8	02662-02800 39.2	02615-02800 44.7 41.3 5.54		
02851-02812		12	19.05	25.40		17.30						
02851-02816		16	25.40	31.75		23.65						
02851-02820		20	31.75	38.10		30.00						
02851-02824		24	38.10	44.45		36.35						
02851-02828		28	44.45	50.80		42.70						
02851-02832		32	50.80	57.15		49.05						
02851-02836		36	57.15	63.50		55.40						
02851-02840		40	63.50	69.85		61.75						
02851-02844		44	69.85	76.20		68.10						
02851-02848		48	76.20	82.55		74.45						
02851-02852		52	82.55	88.90		80.80						
02851-02856		56	88.90	95.25		87.15						
02851-02860		60	95.25	101.60		93.50						
02851-02864		64	101.60	107.95		99.85						
02851-02868		68	107.95	114.30		106.20						
02851-02872	72	114.30	120.65	112.55								
02851-03208	25.4 (1")	8	12.70	19.05	26.2	10.95	58.1	14.6	02662-03200 43.3	02615-03200 49.6 48.5 6.35		
02851-03212		12	19.05	25.40		17.30						
02851-03216		16	25.40	31.75		23.65						
02851-03220		20	31.75	38.10		30.00						
02851-03224		24	38.10	44.45		36.35						
02851-03228		28	44.45	50.80		42.70						
02851-03232		32	50.80	57.15		49.05						
02851-03236		36	57.15	63.50		55.40						
02851-03240		40	63.50	69.85		61.75						
02851-03244		44	69.85	76.20		68.10						
02851-03248		48	76.20	82.55		74.45						
02851-03252		52	82.55	88.90		80.80						
02851-03256		56	88.90	95.25		87.15						
02851-03260		60	95.25	101.60		93.50						
02851-03264		64	101.60	107.95		99.85						
02851-03268		68	107.95	114.30		106.20						
02851-03272	72	114.30	120.65	112.55								
02851-03276	76	120.65	127.00	118.90								
02851-03280	80	127.00	133.35	125.25								
02851-03284	84	133.35	139.70	131.60								
02851-03288	88	139.70	146.05	137.95								
02851-03292	92	146.05	152.40	144.30								



Size Ø	Shear	Tension	Tension
nom.	kN	kN	kN
12.7	64.0	75.8	53.6
15.9	100.0	120.5	85.4
19.1	144.4	178.3	126.3
22.2	193.0	246.6	174.6
25.4	251.3	323.3	229.1

1) Flanged collars are used in applications where the hole on the collar side of the application is oversize or is slotted for alignment purposes. To determine what length of pin is required, add dimension U to the thickness of material being fastened.

Typical placing sequence (Round head style shown for illustration):



Assembly Applications

- Commercial vehicles
- Steel construction
- Bridge building/repair
- Renewable energies
- Railway/rail track
- Mining

Commercial vehicles



Bridge building



Rail track



Lattice towers



Solar power plants



Solar power plants

